

ESTABLISHED 1885

Rogers'
CHOCOLATES™



2023/2024



CULTIVATE BETTER™ COCOA



At Rogers' Chocolates we are proudly committed to sustainable, certified cocoa. As part of our Cultivate Better™ Cocoa initiative, we invest directly into programs that empower prospering farmers, inspire thriving communities and encourage environmental preservation.

TABLE OF CONTENTS

| | | | |
|-------------------------------|-------|-------------------------------------|---------|
| <i>Victoria Creams</i> | 2-3 | <i>Pretzels & Ginger</i> | 26 |
| <i>Empress Squares</i> | 4 | <i>Almond Barks</i> | 27 |
| <i>Almond Brittles</i> | 5 | <i>Truffle Drops</i> | 28 |
| <i>Build A Box</i> | 6 | <i>Nutcorn</i> | 29 |
| <i>Heritage Collection</i> | 7-9 | <i>Snackable Treats</i> | 30 - 31 |
| <i>Specialty Gift Boxes</i> | 10-13 | <i>Jelly Beans</i> | 32 |
| <i>Canadian Art Tins</i> | 14-17 | <i>Baking & Fondue</i> | 33 |
| <i>Thank You Gifts</i> | 18 | <i>Christmas Gift Ideas</i> | 34 - 42 |
| <i>Gourmet Chocolate Bars</i> | 19 | <i>Holiday Discount Program</i> | 35 |
| <i>Grab & Go Sleeves</i> | 20-21 | <i>Advent Calendars</i> | 43 |
| <i>Specialty Bars</i> | 22-23 | <i>Stocking Stuffers</i> | 44 - 48 |
| <i>A Taste From Canada</i> | 24 | <i>Valentine's Day & Easter</i> | 49 |
| <i>Celebration Favours</i> | 25 | <i>Important Information</i> | 49 |

ESTABLISHED 1885

Rogers'
CHOCOLATES™

TASTE A PIECE OF CHOCOLATE

• HISTORY •

Rogers' Chocolates was founded in 1885 by Charles W. (Candy) Rogers.

With his wife, Leah, Charles developed chocolate recipes that made his small shop in Victoria a favourite stop for travellers from all over the world. Faithful to his legacy, over the years we have maintained Charles' commitment to the use of the finest quality natural ingredients in all of his time-honoured recipes. Today, a taste of Rogers' Chocolates is truly a taste of chocolate history.

Charles W. Rogers

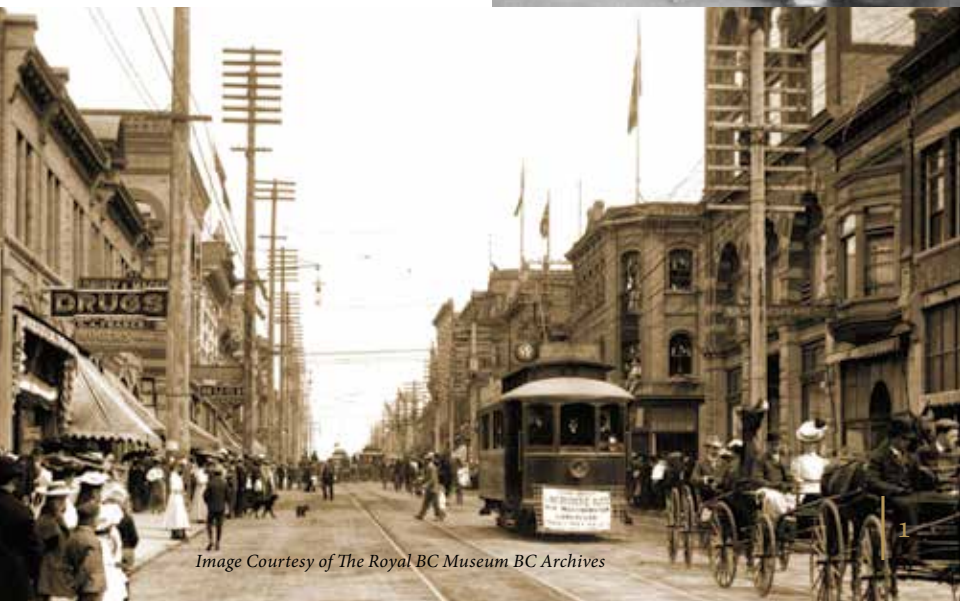


Image Courtesy of The Royal BC Museum BC Archives

Our Victoria Creams are our most famous chocolates that take you back over 135 years to the earliest days of Charles Rogers, our founder and Canada's original chocolatier. Rich and creamy, naturally flavoured whip cream base centers smothered in dark chocolate and milk or dark chocolate for our peanut butter cream. True to Charles' legacy, we still use his original recipe and only the finest ingredients. There are 20 different flavours to try (and 12 seasonal flavours) and each one is a completely sinful delight for the tastebuds.

TRADITIONAL FLAVOURS

*Vanilla • Maple • Peppermint • Coffee • Wild Cherry • Rum • Chocolate
Maple Nut • Chocolate Nut • Orange • Strawberry • Raspberry • Coconut
Caramel • Ginger • Maraschino Cherry • Hazelnut • Marzipan
Peanut Butter (Milk Chocolate) • Peanut Butter (Dark Chocolate)*

SEASONAL FLAVOURS

*Thanksgiving & Christmas - Cranberry • Pumpkin Spice
Gingerbread • Candy Cane • Chocolate Marzipan • Eggnog
Valentine's Day - Cinnamon (heart-shaped)
Easter/Spring - Peach • Blueberry • Butter Cream (egg-shaped)
Lemon • Nougat (Milk Chocolate egg-shaped)*



VICTORIA CREAMS

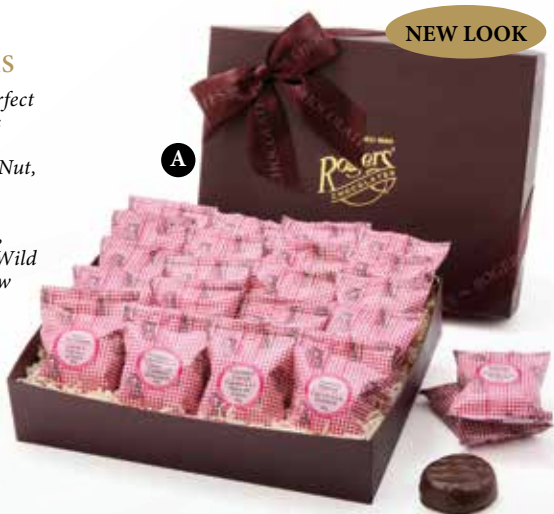
Rich and creamy, naturally flavoured whip cream base centers smothered in dark chocolate and milk or dark chocolate for our Peanut Butter Cream.

Enjoy a classic box of Victoria Creams in dark chocolate below, or build your own “Mix & Match” box of Victoria Creams, Empress Squares and Almond Brittles on Page 6.

A 20 PIECE VICTORIA CREAMS

Our 20 piece collection is the perfect way to try many of our delicious flavours. Flavours included are Caramel, Chocolate, Chocolate Nut, Coconut, Coffee, Ginger, Maple, Maple Nut, Maraschino Cherry, Orange, Peppermint, Raspberry, Rum, Strawberry, Vanilla and Wild Cherry — all enclosed in our new burgundy box.

Item #21022 920g/32.4oz
(20 creams) \$70.49



B 10 PIECE VICTORIA CREAMS

Classically Rogers', this 10 piece selection is an ideal way to try some of our most popular flavours. Flavours included are Caramel, Chocolate, Coffee, Maple, Maraschino Cherry, Orange, Peppermint, Raspberry, Strawberry, Vanilla.

Item #21012 460g/16.2oz
(10 creams) \$36.99



EMPRESS SQUARES (Dark Chocolate & Milk Chocolate)

Fit for royalty! Soft chewy caramel and roasted almonds delicately dipped in dark or milk chocolate. Enjoy a classic box of Empress Squares in milk or dark chocolate below, or build your own “Mix & Match” box of Victoria Creams, Empress Squares and Almond Brittles on Page 6.

NEW LOOK

C 20 PIECE EMPRESS SQUARES

MILK (33% COCOA)

Item #47120 680g/24oz
(20 squares) \$70.49

DARK (54% COCOA)

Item #47020 680g/24oz
(20 squares) \$70.49



D 10 PIECE EMPRESS SQUARES

MILK (33% COCOA)

Item #47110 340g/12oz
(10 squares) \$36.99

DARK (54% COCOA)

Item #47010 340g/12oz
(10 squares) \$36.99

NEW LOOK



ALMOND BRITTLES

CULTIVATE
BETTER™
COCOA

ALMOND BRITTLES (Dark Chocolate & Milk Chocolate)

Roasted almonds rolled into homemade candy. The result is our delicious brittle with a buttery snap, dipped in dark or milk chocolate. Delicious! Enjoy a classic box of Almond Brittles in milk or dark chocolate below, or build your own "Mix & Match" box of Victoria Creams, Empress Squares and Almond Brittles on Page 6.

NEW LOOK

E 20 PIECE ALMOND BRITTLES

MILK (33% COCOA)
Item #41320 720g/25.4oz
(20 chocolates) \$70.49

DARK (54% COCOA)
Item #41020 720g/25.4oz
(20 chocolates) \$70.49



NEW LOOK

F 10 PIECE ALMOND BRITTLES

MILK (33% COCOA)
Item #41310 360g/12.7oz
(10 chocolates) \$36.99

DARK (54% COCOA)
Item #41010 360g/12.7oz
(10 chocolates) \$36.99





G BUILD A BOX

Mix and match to build your own combination of Victoria Creams, Empress Squares and Almond Brittles in our 5pc Custom Classics box, or in our new 10 or 20 piece burgundy gift boxes. (Refer to page 2 for a complete list of our traditional and seasonal Victoria Cream flavours).

Build a Box - 5 Piece
Item #22005 \$17.59

Build a Box - 10 Piece
Item #22010 \$36.99

Build a Box - 20 Piece
Item #22020 \$70.49

H TRADITIONAL ASSORTMENT

A collection of our delicious gingham wrapped legacy collection pieces. Indulge in a dark chocolate Empress Square, dark chocolate Almond Brittle, and three of our most popular Victoria Creams (Vanilla, Chocolate & Raspberry).

Item #50125 210g/7.4oz
(5 chocolates) \$17.59



Two of our largest assortments featuring a new look; favourites for those times when you need an elegant look combined with lots (and lots) of exquisite flavours.

NEW LOOK



A PREMIERE GIFT BOX

Item #50019 1.79kg/3.94lbs
(114 chocolates) \$143.49

B DELUXE ASSORTMENT

Item #50350 830g/29.3oz
(56 chocolates) \$71.69

NEW LOOK



CLASSIC ASSORTMENT – 22 PC

The perfect assortment of Rogers' signature chocolates!

C ALL MILK

This 22pc milk chocolate collection includes a variety of chocolate caramels, mini creams, truffles, almond brittles, Empress Squares, a nougat mini and a pecan chew.

Item #52224 350g/12.4oz
(22 chocolates) \$35.69



D

D ALL DARK

This 22pc dark chocolate collection includes a variety of chocolate caramels, mini creams, truffles, almond brittles, an Empress Square and a Victoria Cream.

Item #52226 375g/13.2oz
(22 chocolates) \$35.69



E MILK & DARK

This 22pc milk and dark chocolate collection includes a variety of chocolate caramels, mini creams, pecan & cashew chews, truffles, a nougat mini and Empress Squares.

Item #52228 360g/12.7oz
(22 chocolates) \$35.69



CLASSIC ASSORTMENT - 15 PC

This assortment contains some of our very best original chocolates. It's perfect for sharing or keeping all to yourself!

F ALL MILK

This 15pc milk chocolate collection includes a variety of caramels, truffles, an almond brittle, a pecan chew, a nougat mini, a chocolate covered almond and a milk Empress Square.

Item #50701 235g/8.3oz
(15 chocolates) \$26.49



G ALL DARK

G ALL DARK

This 15pc dark chocolate collection includes a variety of caramels, truffles, almond brittles, mini creams, a chocolate covered almond and a vanilla Victoria Cream.

Item #50703 245g/8.6oz
(15 chocolates) \$26.49



H MILK & DARK

This 15pc collection includes a variety of caramels, truffles, mini creams, a cashew chew, a nougat mini and a dark Empress Square.

Item #50705 250g/8.8oz
(15 chocolates) \$26.49



A GOLD COLLECTION

Rogers' signature collection of milk and dark chocolates including a variety of caramels, mini creams and truffles. This assortment also features our popular dark Pistachio Cherry Square.

Item #52215 245g/8.64oz
(16 chocolates) \$31.49

Note that the ribbon colour on this assortment changes with the seasons.
Burgundy Ribbon - mid May to early Sept.
Red Ribbon - early Sept. to late Feb.
Pink Ribbon - late Feb. to mid May
Please check our website at www.rogerschocolates.com for the current offerings.



A



B

B TRUFFLES & CREAMS DELIGHT

An elegant two layer gift box featuring our richly flavoured ganache centered truffles and our classic mini creams.

Item #23008 228g/8.04oz
(16 chocolates) \$27.49

C

C LUXURY COLLECTION

Rogers' signature collection of milk and dark chocolates in a two layer gold box. This "luxury" collection includes some of our favourite caramels, mini creams and truffles and also features our very popular dark Pistachio Cherry Square.

Item #52230 490g/17.2oz
(32 chocolates) \$51.49

Note that the ribbon colour on this assortment changes with the seasons.
Burgundy Ribbon - mid May to early Sept.
Red Ribbon - early Sept. to late Feb.
Pink Ribbon - late Feb. to mid May
Please check our website at www.rogerschocolates.com for the current offerings.



SPECIALTY GIFT BOXES

CULTIVATE
BETTER™
COCOA

D CLASSIC ASSORTMENT

An 8 piece assortment that features our most popular chocolates: Mocha, Raspberry, Coconut and 72% Dark Chocolate Truffles, Vanilla and Maple Mini Creams, a Sea Salt Caramel, and our famous Milk Almond Brittle.

Item #51242 121g/4.2oz
(8 chocolates) \$16.49



E NO SUGAR ADDED ASSORTMENT

A collection of no sugar added chocolates containing Dark Chocolate Hazelnut Clusters, Dark Chocolate Caramels, Milk Chocolate Almonds, a Milk Chocolate Cappuccino, and a Dark Chocolate Truffle.

Item #50190 94g/3.32oz
(8 chocolates) \$17.59

F DESSERT TRUFFLES

This assortment of truffles was inspired by well loved desserts that have graced many festive family tables over the years. While these dessert size truffles would be an excellent shared offering after an elegant meal, some of you will be tempted to covet them as a secret, solitary treat. Flavours include: Cheesecake, Crème Brûlée, Black Forest, Key Lime Pie, Pineapple Upside Down Cake and our decadent 72% Dark Chocolate.

Item #50202 360g/12.7oz
(12 chocolates) \$33.59





G CLASSIC TRUFFLES

A selection of our most popular truffles: maple, orange, raspberry, mocha, 72% chocolate and coconut.

Item #50227 230g/8.1oz
(17 chocolates) \$24.99

H MINIATURE VICTORIA CREAMS

A selection of our most popular creams: chocolate, coconut, peppermint, raspberry, coffee, maple and vanilla. Coated in dark chocolate.

Item #20241 250g/8.8oz
(17 chocolates) \$24.99



I 72% DARK CHOCOLATE TRUFFLES

For the true lover of rich dark chocolate. Made with fresh cream and pure Indonesian vanilla, these decadent treats have a velvety centre containing 72% chocolate swathed in a crunchy dark chocolate shell.

Item #50218 230g/8.1oz
(17 chocolates) \$24.99

J ICEWINE TRUFFLES

Made with Canadian Icewine, these decadent truffles make a perfect finish to any evening.

Item #50225 230g/8.1oz
(17 chocolates) \$24.99



SPECIALTY GIFT BOXES

CULTIVATE
BETTER™
COCOA



K DARK CHOCOLATE MINT IMPERIALS

Thin mint centers made from pure peppermint and dipped in bittersweet chocolate. A perfect conclusion to any dining experience.

Item #46221 240g/8.5oz
(24 chocolates) \$24.99

PLEASE NOTE: The pure peppermint oil in our Mint Imperials makes them so minty that we do not put them in any assortments.

L SEA SALT CARAMELS

A checkerboard of pink and white sea salt caramels is just the right balance of sweet and savoury.

Item #50226 240g/8.5oz
(12 chocolates) \$24.99



M NUTS & CHEWS

A milk and dark chocolate assortment featuring our Pecan and Cashew Chews, Vanilla Caramel, Chocolate Caramel, Raspberry Caramel, Sea Salt Caramels, Salted Milk Empress Squares, Milk Peanut Butter Mini, Nougat Mini, and white and dark Chocolate Covered Almonds.

Item #50245 200g/7oz
(12 chocolates) \$24.99



N SEA SALT EMPRESS SQUARES

Our exquisite Empress Squares consisting of soft English caramel and roasted almonds, smothered in milk chocolate and sprinkled with sea salt.

Item #50229 233g/8.2oz
(12 chocolates) \$24.99



SMALL TINS

90g/3.2oz (6 chocolates)

Contains a selection of milk, dark and white chocolates including mini creams, a mini bar, an Empress Square and 2 chocolate covered almonds.

\$15.49



A

NEW



A

VICTORIA HARBOUR
By Marilyn Bury

Item #50775

B

NEW



B

EAVESDROPPING
By Morgan Warren

Item #50736

C

NEW



C

ORCAS AT SUNSET
By Misha Smart

Item #50734

D

NEW



D

KULUS
By Richard Hunt

Item #50733

E

NEW



E

HUMPBACK
By Misha Smart

Item #50791



F **THE PLEDGE**
By Peter Wyse
Item #50795



G **WAITING FOR THE
POND TO FREEZE**
By Timothy Wilson Hoey
Item #50735

MEDIUM TINS

200g/7oz (15 chocolates)

Contains an assortment of
milk and dark chocolates
including mini creams, truffles,
butter caramels, a mini nougat
and a mini bar.

\$24.69

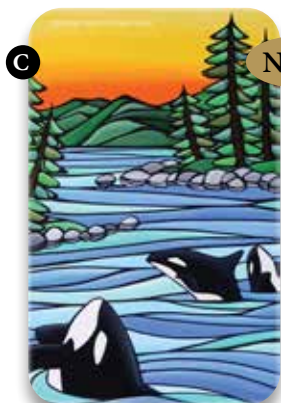
NEW



A **HERITAGE STORE**
By Sharon Lam
Item #50694



B **RETURNING HOME**
By Art By Di
Item #50692



NEW

C MORNING SONG
By Misha Smart
Item #50686



NEW

D SPRING VISITOR
By Morgan Warren
Item #50617
* Available Spring 2024



E HABOUR VIEW
By Marilyn Bury
Item #50690



NEW

F SPAWN
By Art By Di
Item #50616
* Available Spring 2024



NEW

G CANOE CRITTERS
By Timothy Wilson Hoey
Item #50618

LARGE TIN

415g/14.6oz (28 chocolates)

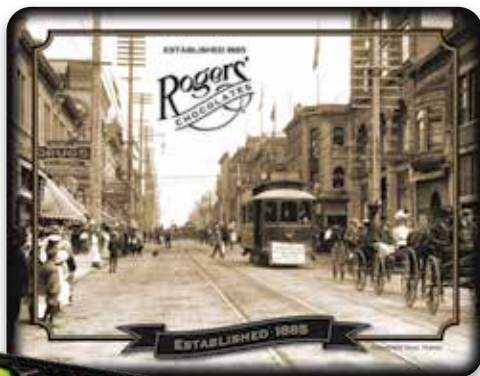
Contains an assortment of milk, dark and white chocolates including mini creams, chocolate covered almonds, truffles, Empress Squares, butter caramels and mini bars.

\$39.89

A

A HERITAGE TIN

Item #50526



NEW

B SURFACE By Art By Di Item #50543

B





A THANK YOU ASSORTMENT

A classic way to express gratitude. This 8 piece assortment includes some of our most popular chocolates: Mocha, Raspberry, Coconut and 72% Dark Chocolate Truffles, Vanilla and Maple Mini Creams, a Sea Salt Caramel, and our famous Milk Almond Brittle.

Item #51240 121g/4.2oz
(8 chocolates) \$16.49

B DARK CHOCOLATE THANK YOU BAR

A 54% dark chocolate bar in a 3" x 3" format. A perfect little gift of thanks for someone you appreciate.

Item #35627 34g/1.2oz \$3.99



C MILK CHOCOLATE THANK YOU BAR

A 33% milk chocolate bar in a 3" x 3" format. A perfect little gift of thanks for someone you appreciate.

Item #35626 34g/1.2oz \$3.99

GOURMET CHOCOLATE BARS

CULTIVATE
BETTER™
COCOA

A fine tradition, with a twist. Sustainable certified cocoa suddenly becomes even more delectable when blended with premium ingredients.

DARK CHOCOLATE BARS

| | | | |
|--------------------------------------|-------------|-----------|--------|
| 63% Cocoa Dark Chocolate Bar | Item #35524 | 60g/2.1oz | \$4.99 |
| Peppermint Dark Chocolate Bar | Item #35505 | 75g/2.6oz | \$4.99 |
| Almonds & Raisins Dark Chocolate Bar | Item #35517 | 75g/2.6oz | \$4.99 |
| Icewine Truffle Dark Chocolate Bar | Item #35520 | 75g/2.6oz | \$4.99 |
| Raspberry Truffle Dark Chocolate Bar | Item #35521 | 75g/2.6oz | \$4.99 |
| Butter Caramel Dark Chocolate Bar | Item #35522 | 75g/2.6oz | \$4.99 |

MILK CHOCOLATE BARS

| | | | |
|-----------------------------------|-------------|-----------|--------|
| Milk Chocolate Bar | Item #35501 | 75g/2.6oz | \$4.99 |
| Butter Caramel Milk Chocolate Bar | Item #35523 | 75g/2.6oz | \$4.99 |
| Honeycomb Milk Chocolate Bar | Item #35588 | 75g/2.6oz | \$4.99 |

WHITE CHOCOLATE BARS

| | | | |
|---------------------|-------------|-----------|--------|
| White Chocolate Bar | Item #35586 | 75g/2.6oz | \$4.99 |
|---------------------|-------------|-----------|--------|

NO SUGAR ADDED

| | | | |
|-----------------------------------|-------------|-----------|--------|
| No Sugar Added Dark Chocolate Bar | Item #35509 | 75g/2.6oz | \$5.49 |
| No Sugar Added Milk Chocolate Bar | Item #35508 | 75g/2.6oz | \$5.49 |





A SEA SALT CARAMELS

Our smooth vanilla caramel with a little sprinkle of sea salt. Just the right balance of sweet and savoury.

Item #51518 78g/2.8oz
(4 chocolates) \$9.49

B SEA SALT EMPRESS SQUARES

Soft and chewy caramel with roasted almonds delicately dipped in silky milk chocolate with just a touch of sea salt.

Item #51536 78g/2.8oz
(4 chocolates) \$9.49



C RASPBERRY CARAMELS

Our soft and chewy caramel enriched with natural raspberry flavour and raspberry juice which is then covered in 54% semi-sweet dark chocolate.

Item #51516 78g/2.8oz
(4 chocolates) \$9.49



D DARK CHOCOLATE PISTACHIO CHERRY SQUARES

Freshly candied pistachio pieces, dried Bing cherry bits, pistachio butter and white chocolate are blended together to form the center of this chocolate which is then enrobed in rich dark chocolate.

Item #51512 78g/2.8oz
(4 chocolates) \$9.49



E CASHEW CHEWS

Rich and chewy chocolate caramel combined with buttery roasted salted cashew pieces wrapped in dark chocolate.

Item #51514 78g/2.8oz
(4 chocolates) \$9.49



F PECAN CHEWS

Sweet, creamy, chewy vanilla caramel balanced with roasted bitter pecan pieces smothered in milk chocolate.

Item #51534 78g/2.8oz
(4 chocolates) \$9.49



G CHAMPAGNE TRUFFLES

Champagne infused rich chocolate ganache center, with a delicate dark chocolate coating.

Item #51520 68g/2.40oz
(5 chocolates) \$9.49

H ICE WINE TRUFFLES

Made with Canadian Ice Wine, these decadent truffles make a perfect finish to any evening.

Item #51522 68g/2.40oz
(5 chocolates) \$9.49



I DARK CHOCOLATE MAPLE CARAMELS

Our chewy caramel enriched with natural maple flavour and maple syrup which is then covered in 54% dark chocolate and sprinkled with granulated maple sugar.

Item #51510 78g/2.8oz
(4 chocolates) \$9.49

* Not available until early spring 2024.



J MILK CHOCOLATE MAPLE CARAMELS

Our chewy caramel enriched with natural maple flavour and maple syrup which is then covered in 33% milk chocolate and sprinkled with granulated maple sugar.

Item #51530 78g/2.8oz
(4 chocolates) \$9.49

* Not available until early spring 2024.





A 54% LAVENDER
BLISS BAR

We've infused our silkiest 54% dark chocolate with pure lavender oil from Okanagan Lavender and Herb Farm to create this floral indulgence in a 3" x 3" format. A truly blissful delight for the senses!

Item #35605 34g/1.2oz \$3.99

B LEMON PISTACHIO
BRITTLE BAR

Light, bright and refreshing - buttery handmade toffee infused with lemon oil, studded with chopped pistachio kernels and drizzled with our decadent dark chocolate. A tangy, nutty, 3" x 3" grab'n go treat!

Item #35606 34g/1.2oz \$3.99



B

C SEA SALT
SPARKLER BAR

We took our finest 72% dark chocolate and hand sprinkled stunning pink sea salt to create our rich, silky smooth, sweet and salty, shimmering 72% Sea Salt Sparkler in a 3" x 3" format.

Item #35604 34g/1.2oz \$3.99



C

D 72% DARK
CHOCOLATE BAR

For the true chocolate lover - 72% indulgent dark chocolate in a 3" x 3" format.

Item #35620 34g/1.2oz \$3.99



D

E 80% DARK CHOCOLATE BAR

Unadulterated chocolate - 80% melt-in-your-mouth dark chocolate in a 3" x 3" format.

Item #35621 34g/1.2oz \$3.99



F 91% DARK CHOCOLATE BAR

F 91% DARK CHOCOLATE BAR

For those who love their chocolate as dark as possible - the 91% cocoa dark chocolate bar in a 3" x 3" format.

Item #35622 34g/1.2oz \$3.99



G DARK CHOCOLATE MINT PATTY

A 2" round patty with a thin mint center made from pure peppermint and encased in bittersweet chocolate.

Item #30874 24g/.85oz \$1.85



H MILK CHOCOLATE LOGO BAR

H MILK CHOCOLATE LOGO BAR

A 2" x 2" solid milk chocolate bar embossed with our classic logo.

Item #30873 18g/.63oz \$1.85



I DARK CHOCOLATE LOGO BAR

I DARK CHOCOLATE LOGO BAR

A 2" x 2" solid dark chocolate bar embossed with our classic logo.

Item #30872 18g/.63oz \$1.85



A TASTE FROM CANADA
MAPLE FLAVOURED MILK
CHOCOLATE BAR

Rogers' 33% milk chocolate flavoured with real maple syrup and maple flavouring, in a 5.5" x 2.75" solid chocolate bar.

Item #35411 75g/2.6oz \$5.49



A

B

B TASTE FROM CANADA
DARK CHOCOLATE BAR

For the dark chocolate lover - 54% indulgent dark chocolate in a 5.5" x 2.75" solid chocolate bar.

Item #30077 75g/2.6oz \$5.49



B

C TASTE FROM VICTORIA
MILK CHOCOLATE BAR

Rogers' creamy 33% milk chocolate in a 5.5" x 2.75" solid chocolate bar.

Item #30075 75g/2.6oz \$5.49



C

D

D TASTE FROM
VANCOUVER
MILK CHOCOLATE BAR

Rogers' creamy 33% milk chocolate in a 5.5" x 2.75" solid chocolate bar.

Item #35410 75g/2.6oz \$5.49



D



We promise peace of mind knowing that our legacy of quality and elegance will be the perfect compliment to your special event.

- One on one care with our dedicated customer service representative.
- Classic gold box available for 2 pieces or 4 pieces of chocolates.
- Customizable ribbon options to commemorate your event. (Please note that this option requires a minimum of 50 units and additional lead time.)
- A selection of our absolute finest chocolates made with Sustainable Certified Cocoa.
- Volume discounts for eligible orders.
- Minimum three week lead time required.

- 1 *Select Your Box* 2pc Gold, 4pc Gold
- 2 *Select Your Ribbon* Pink, Blue, Green, White or Grey (or ask us about other customized colour options.)
- 3 *Select Your Chocolates* Choose from an assortment of Rogers' absolute finest, including creams, truffles and caramels.



Contact Us At **1-800-663-2220** For Details
or Visit Us At **ROGERSCHOCOLATES.COM**

A CHOCOLATE COVERED PRETZELS

Milk Chocolate

Item #71010 170g/6oz \$11.99



Dark Chocolate

Item #71012 170g/6oz \$11.99



B CHOCOLATE COVERED GINGER

Milk Chocolate

Item #50842 160g/5.64oz \$15.49



Dark Chocolate

Item #50840 160g/5.64oz \$15.49



ALMOND BARKS

CULTIVATE
BETTER™
COCOA

*Always a favourite!
Solid pieces of decadent
chocolate with whole, dry
roasted crunchy almonds.*



- A** MILK CHOCOLATE ALMOND BARK
Item #47520
200g/7.05oz \$17.29
- B** DARK CHOCOLATE ALMOND BARK
Item #47521
200g/7.05oz \$17.29
- C** WHITE CHOCOLATE ALMOND BARK
Item #47522
200g/7.05oz \$17.29





A Gourmet Drinkable Snack 175g/6.2oz \$13.99

Versatile truffles bursting with flavour, perfect for crafting hot chocolate or as bite-sized treats all on their own. To craft the perfect gourmet hot chocolate, drop 3 - 4 Truffle Drops into 1 cup of hot milk and let sit for approximately 30 seconds before stirring, whisking or shaking!



A DARK CHOCOLATE TRUFFLE DROPS
Item #47700



B MILK CHOCOLATE TRUFFLE DROPS
Item #47702

Our Nutcorn is a decadent and indulgent snack. Prepare your tastebuds for an addicting, “I can’t stop eating this” treat!



A

A HONEY ALMOND PECAN

Item #60012
140g/4.9oz \$8.39

B



B TOFFEE CASHEW ALMOND

Item #60010
140g/4.9oz \$8.39

C



C MAPLE NUT

Item #60014
140g/4.9oz \$8.39



Nuts, fruits, caramels and espresso beans wrapped in layers of premium chocolate.

- A** DARK CHOCOLATE BLUEBERRIES
Item #50820
150g/5.3oz \$11.29
- B** ENGLISH TOFFEE CARAMELS
Item #50824
150g/5.3oz \$11.29
- C** DARK CHOCOLATE SEA SALT CASHEWS
Item #50826
150g/5.3oz \$11.29

SNACKABLE TREATS

CULTIVATE
BETTER™
COCOA



D **BARISTA BLEND
ESPRESSO BEANS**
Item #50832
150g/5.3oz \$11.29

E **DARK CHOCOLATE
ORANGE PEEL**
Item #50834
130g/4.5oz \$11.29

F **MILK CHOCOLATE
BING CHERRIES**
Item #50822
150g/5.3oz \$11.29

G **DOUBLE DIPPED
MACADAMIAS**
Item #50836
150g/5.3oz \$12.39

H **DARK CHOCOLATE
ALMONDS**
Item #50830
150g/5.3oz \$11.29

I **GOURMET
CHOCOLATE NUT
MIX**
Item #50838
150g/5.3oz \$11.29



A REAL FRUIT JELLY BEANS

Premium real fruit jelly beans made with 100% natural flavours and colours. A combination of 10 different flavors including Peach, Lemon, Apple, Tart Cherry, Grape, Watermelon, Raspberry, Strawberry, Guava and Coconut jelly beans.

Item #47620 160g/5.6oz \$7.29

B MILK CHOCOLATE JELLY BEAN BAR

Rogers' decadent 33% milk chocolate combined with naturally flavoured Peach, Lemon, Apple, Tart Cherry, Grape, Watermelon, Raspberry, Strawberry, Guava and Coconut jelly beans.

Item #35628 44g/1.5oz \$3.99



C WHITE CHOCOLATE JELLY BEAN BAR

Rogers' creamy white chocolate combined with naturally flavoured Peach, Lemon, Apple, Tart Cherry, Grape, Watermelon, Raspberry, Strawberry, Guava and Coconut jelly beans.

Item #35629 44g/1.5oz \$3.99





Bring the luxury and rich taste of Rogers' Chocolates to your kitchen! Our collection of Baking and Fondue chips and wafers comes in a resealable pouch bag. Made with premium Sustainable Certified Cocoa, these chips and wafers will elevate your at-home baking to gourmet status. Also check out our Rogers' Kitchen web page for recipes, news, chocolate care, and inspiration!

CHOCOLATE CHIPS 384g/13.5oz

- A** DARK CHOCOLATE CHIPS
Item #10214 \$13.69
- B** MILK CHOCOLATE CHIPS
Item #10212 \$13.69
- C** WHITE CHOCOLATE CHIPS
Item #10216 \$11.99

CHOCOLATE WAFERS 384g/13.5oz

- D** DARK CHOCOLATE WAFERS
Item #10222 \$12.49
- E** MILK CHOCOLATE WAFERS
Item #10220 \$12.49

Christmas products will be available to purchase as of September 18, 2023, while quantities last.



SAVE UP TO 25% FROM OCTOBER 1 TO DECEMBER 15

When shipping to one address only.

| SPEND | DISCOUNT |
|-------------------|----------|
| \$499 - \$799 | 5% |
| \$800 - \$1,149 | 10% |
| \$1,150 - \$4,999 | 25% |
| \$5,000 or more | CALL US |

- Discounts only apply when shipping to one address. If shipping to multiple addresses, please call us for more information.
- Not available on the purchase of gift cards or previously discounted products.
- Excludes taxes and freight.
- Not available in combination with other offers.
- Not applicable to custom orders including shipping to multiple addresses. Please call us for more information.
- Subject to product availability.
- Subject to change and/or cancellation at any time.
- For qualifying orders over \$499 (before discount), shipping to one address in BC, AB, SK, MB, ON and QC is free. Shipping to NS, NB, PEI, NI, NT, YT, NU, USA and International will be quoted at checkout.

Call 1-800-663-2220 to place your order.

All orders must be received and paid for by DECEMBER 8th, and picked up or shipped by DECEMBER 15th.

ROGERSCHOCOLATES.COM

A LUXURY COLLECTION

This elegant two-layer gold box is wrapped in a festive red ribbon and features Rogers' signature collection of milk and dark chocolate. This "luxury" collection includes some of our favourite caramels, mini creams and truffles and also features our very popular dark chocolate Pistachio Cherry Square.

Item #52231 490g/17.2oz
(32 chocolates) \$51.49



B HOLIDAY ASSORTMENT

We've wrapped up a seasonal selection of our favourite chocolates in all the glitter and gold of the holidays. This assortment also features our Candy Cane Caramels, available only during the holidays. A perfect indulgence to share with loved ones, or to tuck under the tree!

Item #52220 245g/8.64oz
(16 chocolates) \$32.99

C GOLD COLLECTION

Rogers' signature collection of milk and dark chocolates including a variety of caramels, mini creams and truffles. This assortment also features our popular dark Pistachio Cherry Square.

Item #52209 245g/8.64oz
(16 chocolates) \$31.49



CHRISTMAS GIFT IDEAS

CULTIVATE
BETTER™
COCOA

D HOLIDAY GIFT BOX

An exquisite assortment of our most treasured holiday treats. This gift box includes our “Merry Christmas” Assortment, Dark Chocolate Cane Caramels, Milk Chocolate Pecan Chews and 4 festive Victoria Creams (Cranberry, Candy Cane, Eggnog, Chocolate Marzipan). Packaged and ribboned in our new box, this selection is ready for the giving ... or the getting!

Item #50052 461g/16.3oz
\$59.99



E CANDY CANE CARMELS

A checkerboard of milk and dark Candy Cane Caramels in a new box of 12 pieces. Buttery caramels smothered in milk or dark chocolate and sprinkled with candy cane pieces. Perfection!

Item #50228 240g/8.5oz
(12 chocolates) \$24.99

F MERRY CHRISTMAS ASSORTMENT

An elegant assortment that includes some of our most popular chocolates: Mocha, Raspberry, Coconut and 72% Dark Chocolate Truffles, Vanilla and Maple Mini Creams, a Sea Salt Caramel, and our famous Milk Almond Brittle.

Item #51248 121g/4.2oz
(8 chocolates) \$16.49



FESTIVE CREAMS

Our world famous Victoria Creams with a festive twist! These seasonal flavours of Candy Cane, Chocolate Marzipan, Eggnog, Cranberry and Gingerbread are available to purchase in a 5pc, 10pc or 20pc box. Or you can Build Your Own Custom Box of flavours on our website at rogerschocolates.com.



G FESTIVE CREAMS 5PC BOX

A festive box of our popular holiday creams. Flavours include Candy Cane, Chocolate Marzipan, Eggnog, Cranberry and Gingerbread.

Item #50130 230g/8.11oz
(5 creams) \$17.59

H FESTIVE CREAMS 20PC BOX

The perfect festive gift for the Victoria Cream lover in your life. A 20 piece collection of 4 Candy Cane, 4 Chocolate Marzipan, 4 Eggnog, 4 Cranberry and 4 Gingerbread creams — all enclosed in our new burgundy box.

Item #21023 920g/32.4oz
(20 creams) \$70.49



NEW LOOK

H

I

NEW LOOK

I FESTIVE CREAMS 10PC BOX

A 10 piece collection of 2 Candy Cane, 2 Chocolate Marzipan, 2 Eggnog, 2 Cranberry and 2 Gingerbread creams — all enclosed in our new burgundy box.

Item #21013 460g/16.2oz
(10 creams) \$36.99

CHRISTMAS GIFT IDEAS

CULTIVATE
BETTER™
COCOA

LARGE SEASONAL TINS

415g/14.6oz (28 chocolates)

Contains an assortment of milk, dark and white chocolates including mini creams, chocolate covered almonds, truffles, Empress Squares, butter caramels and mini bars.

\$39.89

A BEST CHRISTMAS EVER

By Trisha Romance

Item #50549



NEW



A



NEW

B FULLY PACKED SLEIGH

By Larry Hersberger

Item #50547

B

Note that all tin images are subject to availability and some tin images may be sold seasonally only. Please check our website at www.rogerschocolates.com for the current offerings.



C FINAL TOUCHES
By Larry Hersberger
Item #50541
** Limited Quantities*



D BY THE LIGHT
OF THE NORTHERN
SKY
By Rod Charlesworth
Item #50539
** Limited Quantities*



CHRISTMAS GIFT IDEAS

CULTIVATE
BETTER™
COCOA

MEDIUM SEASONAL TINS

200g/7oz (15 chocolates)

Contains an assortment of milk and dark chocolates including mini creams, truffles, butter caramels and a mini bar.

\$24.69

- E** **MAGICAL SNOWMAN**
By Larry Hersberger
Item #50696



- F** **SANTA'S LITTLE HELPER**
By Larry Hersberger
Item #50698



- H** **HOLIDAY HOOPLA**
By Sharon Lam
Item #50699



- G** **WINTER JOY**
By Morgan Warren
Item #50678

Note that all tin images are subject to availability and some tin images may be sold seasonally only. Please check our website at www.rogerschocolates.com for the current offerings.

SMALL SEASONAL TINS

90g/3.2oz (6 chocolates)

Contains a selection of milk, dark and white chocolates including mini creams, a mini bar, an Empress Square and 2 chocolate covered almonds.

\$15.49

I CHRISTMAS NAP
By Trisha Romance
Item #50794



NEW



J LOADING THE
SLEIGH
By Larry Hersberger
Item #50797

NEW



K THE PLEDGE
By Peter Wyse
Item #50795

NEW

L HAND IN HAND
By Trisha Romance
Item #50796



NEW

ADVENT CALENDARS

CULTIVATE
BETTER™
COCOA

ADVENT CALENDARS

200g/7oz (25 chocolates) **\$19.99**

Our classic advent calendars with images provided by Canadian artists, are the perfect holiday tradition to countdown to Christmas!

NEW

A **HOLIDAY
HOOPLA**
By Sharon Lam

Dark Chocolate Item #58252

Milk Chocolate Item #58250



A

NEW

B **BEFORE THE BIG
GAME**
By Josette Couillard

Dark Chocolate Item #58248

Milk Chocolate Item #58246



B



A CANDY CANE BARKS

200g/7oz | \$17.29

A seasonal favourite! Hand-made solid pieces of chocolate flavoured with natural peppermint oil and dusted with crushed candy cane pieces.

Dark Chocolate Item #47526

Milk Chocolate Item #47525

White Chocolate Item #47527



B

B CANDY CANE CARMELS

78g/2.8oz | 4 chocolates
\$9.49

Mint, caramel and chocolate come together to make perfection! Buttery caramels smothered in milk or dark chocolate and sprinkled with candy cane pieces, they're sure to impress the tastebuds.



Dark Chocolate Item #51525

Milk Chocolate Item #51540

STOCKING STUFFERS

CULTIVATE
BETTER™
COCOA



C STOCKINGS

72g/2.54oz | \$5.25

Dark Chocolate Item #58118
Milk Chocolate Item #58119
White Chocolate Item #58120



D HOLIDAY JELLY BEAN BAR

Rogers' decadent 33% milk chocolate, combined with naturally flavoured Apple, Tart Cherry and Coconut jelly beans.

Item #35630 44g/1.6oz \$3.99



E HOLIDAY JELLY BEANS

Premium real fruit jelly beans made with 100% natural flavours and colours to deliver a vibrant taste. Flavours include Apple, Tart Cherry and Coconut.

Item #47623 160g/5.6oz \$7.29



F FESTIVE BITES

Solid milk or dark chocolate pieces wrapped in festive foils.

Milk Item #58066 *Dark* Item #58065
144g/5.08oz \$15.99
(Approximately 29 pieces)

G MERRY CHRISTMAS CHOCOLATE BARS

75g/2.6oz | \$5.49

6" x 3" solid chocolate bars imprinted with "Rogers' Chocolates". Available in 33% milk chocolate or 54% dark chocolate, these are the perfect addition to any stocking!

Dark Chocolate Item #35624

Milk Chocolate Item #35623



H HAPPY HOLIDAYS MINI BARS

18g/0.63oz | \$1.85

Bite-sized 2" x 2" solid chocolate treats imprinted with a Christmas tree. Available in 33% milk chocolate and 54% dark chocolate.

Dark Chocolate Item #30865

Milk Chocolate Item #30855



STOCKING STUFFERS

CULTIVATE
BETTER™
COCOA



A

A IRISH CREAM TRUFFLE DROPS

Item #47708 175g/6.2oz \$13.99

truffle DROPS

A Gourmet Drinkable Snack

Versatile truffles bursting with flavour, perfect for crafting hot chocolate or as bite-sized treats all on their own. To craft the perfect gourmet hot chocolate, drop 3 - 4 Truffle Drops into 1 cup of hot milk and let sit for approximately 30 seconds before stirring, whisking or shaking!

B



B MIDNIGHT MINT TRUFFLE DROPS

Item #47705 175g/6.2oz \$13.99

72% dark chocolate ganache centres with pure peppermint oil covered in a dark chocolate shell.

C



C PUMPKIN SPICE TRUFFLE DROPS

Item #47707 175g/6.2oz \$13.99

Milk chocolate truffle centres infused with pumpkin and spice, and enrobed in a delicate white chocolate shell.



A SANTA LOLLIPOPS
62g/2.19oz | \$6.29

Dark Chocolate Item #58079
Milk Chocolate Item #58080
White Chocolate Item #58081



B SANTAS
105g/3.70oz | \$7.34

Dark Chocolate Item #58101
Milk Chocolate Item #58102



C NUTCRACKERS
90g/3.17oz | \$6.29

Dark Chocolate Item #58106
Milk Chocolate Item #58107
White Chocolate Item #58108

D NO SUGAR ADDED
CHOCOLATE WREATHS

120g/4.23oz | \$10.99

NSA Dark Chocolate Item #58111
NSA Milk Chocolate Item #58112



Our entire VALENTINE'S DAY

collection of products will be available for ordering online at rogerschocolates.com as of

January 8, 2024.



NEW



Our entire **EASTER** collection of products will be available for ordering online at rogerschocolates.com as of **February 26, 2024.**

PRODUCT CARE

Always store chocolate in a cool dry place, away from a heat source or direct light, with consistent temperature between 12 and 20 degrees Celsius (55 and 68 degrees Fahrenheit). Keep your chocolates away from strong odours as they may absorb the odour and be negatively impacted by it. Do not refrigerate.

PRICES AND PRODUCT AVAILABILITY

While we do our utmost to maintain our prices and always have our products in stock, we are subject to the ever changing world market for commodities. As a result, prices and product availability are subject to change without notice. We apologize for any inconvenience that this may cause our customers. Product may not be exactly as shown.

PRODUCT IMAGERY

While we make our best efforts to provide accurate imagery, the products as presented within this catalogue may not be exactly as shown.

ESTABLISHED 1885



VISIT ONE OF OUR
SWEET SPOTS TODAY

VANCOUVER ISLAND

DOWNTOWN HERITAGE STORE, 913 Government Street, 250-881-8771

OAK BAY, 2234 Oak Bay Avenue, 250-598-2911

FACTORY STORE (Royal Oak), 4253 Commerce Circle, 250-727-6851

SIDNEY, 2423 Beacon Avenue, 250-655-0305

UPTOWN, #129 - 3551 Uptown Boulevard, 778-433-2604

VANCOUVER

EDGEMONT VILLAGE, 3069 Edgemont Boulevard, 604-770-4088

GRANVILLE ISLAND, 1571 Johnston Street, 778-371-7314

WESBROOK VILLAGE, 3312 Shrum Lane, 604-222-9605

We ship from our factory in Victoria BC throughout Canada and the USA. Please contact us for International shipping inquiries.

To place an order, visit

ROGERSCHOCOLATES.COM

call 1-800-663-2220

For inquiries, email: info@rogerschocolates.com